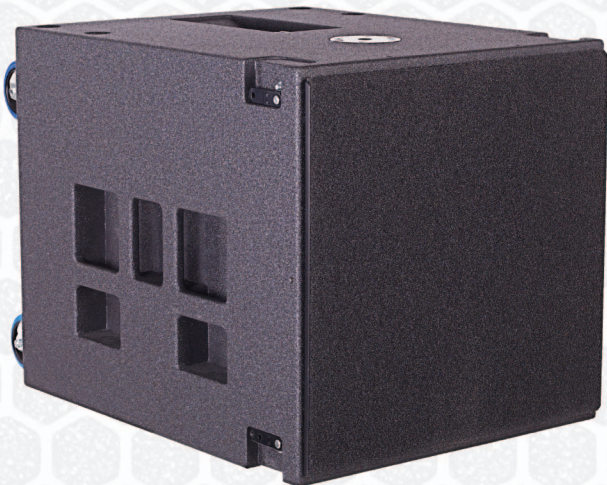




CPD WL POWERED



In spite of its small stature, the CPD WL delivers a very deep, powerful yet clean, and dry sound. The speaker cabinet is a classic-reflex design - 1 x 18" - driven by a 900Wrms PWM amplifier and has performance of the highest quality. What makes the CPD WL unique is the highly durable long throw driver with a 114 mm voice coil and reinforced cone, plus a directivity for frequencies in the range of 40Hz: the 2 bass reflex openings have a large exponential cross-sectional contour that has particularly high efficiency and minimal distortion through minor losses at the tunnel openings.

The CPD WL's small size makes it especially qualified for venues where little space on the stage is available, specifically in combination with a C or CPD LINE ARRAY where the subwoofers need to be flown. Integrated C RIG fly ware allows secure stacking and rigging with several KS CPD speaker systems. Three CPD WL subs stacked upon one another provide the correct height level for the CPD 1214 or a CPD LINE ground stack. The CPD WL creates out of the bass frequencies of the left and right channel, a summed, loss-free and highly efficient mono signal.

The speaker cabinet construction is, like all KS AUDIO systems, built from birch plywood with an extremely robust charcoal colored Polyurethane coating. At your request the finish available can be changed to any desired color from the RAL color charts. C RIG fly ware, Handholds, an M20 pole mount, and protective grill, with or without acoustic foam, and four stable wheels on the backside, are further features of this high-quality product. A protective transport cover is also available.

The rear mounted FIR CONTROL® DSP / PWM amplifier operates very efficiently without the need of a sometimes distractingly loud - cooling fan. The FIR crossover and filter is specially matched to the driver, with corresponding compressors and limiters to ensure safe operation. The electronically balanced input is in the form of XLR F+M connectors. In addition to the power switch, the control panel also has a selectable digital volume / delay control to individually adjust for each venue and offers a digital delay reaching up to 40 m (120ft) for decentralized PA systems.

With a 2-channel redundancy, the volume control allows for adjustment with a range of +/-9dB. Another special feature is the DSP Controller with its integrated Delay. Which allows on-site adjustment, or the creation of a focused directivity mass-array without any additional equipment. The limiter prevents overloading and provides for frequency response correction. All functions of the DSP controllers can be adjusted and controlled over the Ethernet network. The most important parameters are presented on an LED display and can be adjusted directly on the unit.

The sturdy protective grill covers the entire front and can also be covered in "invisible" acoustic foam. A protective transport cover is also available.



C WL UNPOWERED

Same as CPD WL but unpowered.

Technical Specifications

frequency response
output SPL (pink noise at 6dB crest factor)
dispersion angle (horizontal x vertical in degrees)
recommended amplifier / system controller type
transducer
power rms / peak in Watts (AES standard)
amplification / x-over
input connectors
output connectors
cabinet
grill
finish
dimensions (height x width x depth)
weight (without options)
features
options

C WL unpowered

38 - 120Hz +/-3dB
127dB / 133dB peak
omni directional
KS TA 2D or TA 4D / D MOD® or FIRMOD2®
18" cone, 4.5" voice coil, 114 mm long excursion
900 / 1,800
woofer mode / high cut 120Hz
Speakon NL4
Speakon NL4
birch plywood
perforated RVS + acoustic foam (inside or outside)
charcoal polyurethane
58 x 58 x 72 cm 22.6" x 22.6" x 28.3"
49 kg 108 lbs
integrated C-RIG flyware, M20 pole mount, wheels
C-RIG cradle, frontcover (only with inside foam),
black HD cover, finish available in 200 RAL colors

Technical Specifications

frequency response
output SPL (pink noise at 6dB crest factor)
dispersion angle (horizontal x vertical in degrees)
integrated amplifier / system controller type
transducers
power rms/peak in Watts (AES standard)
amplification / x-over
input signal
input connectors
output connectors
cabinet
grill
finish
dimensions (height x width x depth)
weight (without options)
features
options

CPD WL powered

38 - 120Hz +/- 3dB
127dB / 133dB peak
omni directional
PWM fully bridged / FIR CONTROL® DSP
18" cone, 4.5" voice coil, 114 mm long excursion
900 / 1,800
woofer mode / hi-cut 120Hz
automatic detection analog or digital AES/EBU XLR3
XLR3 / powerCON inlet (117/230VAC)
XLR3 - thru / powerCON outlet
birch plywood
perforated RVS + acoustic foam (inside or outside)
charcoal polyurethane
58 x 58 x 72 cm 22.6" x 22.6" x 28.3"
57 kg 125 lbs
ethernet in/out, remote controlled, integrated digital
delay with display, integrated C-RIG flyware,
M20 pole mount, self regulating power supply
C-RIG cradle, black HD cover, frontcover (only with
inside foam), finish available in 200 RAL colors



Palm Coast Praise Church
Bunnell, Florida, USA